

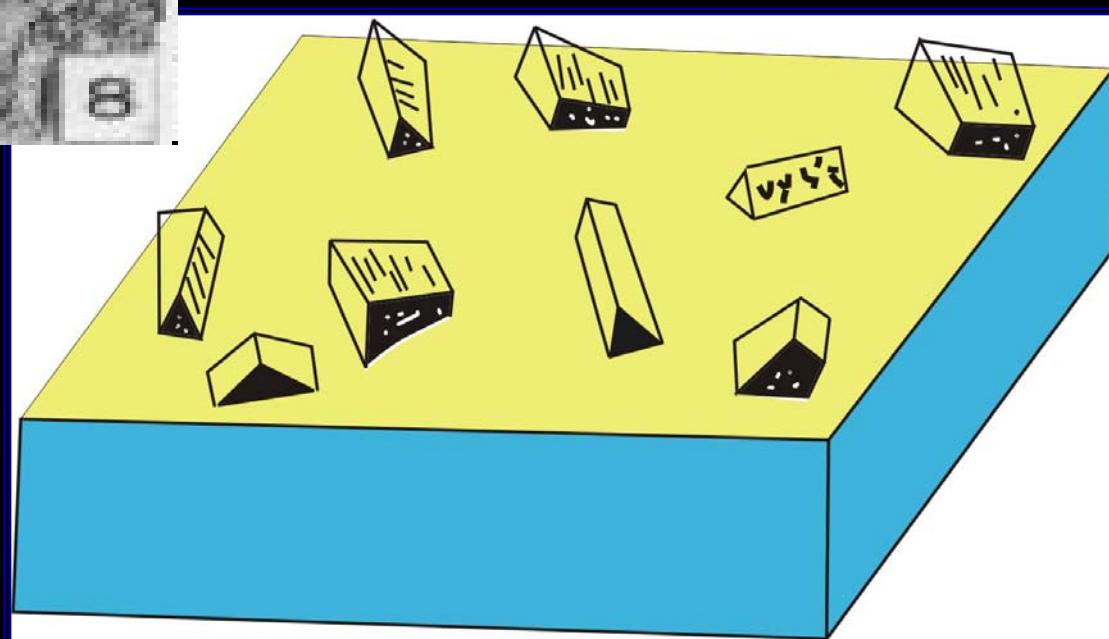
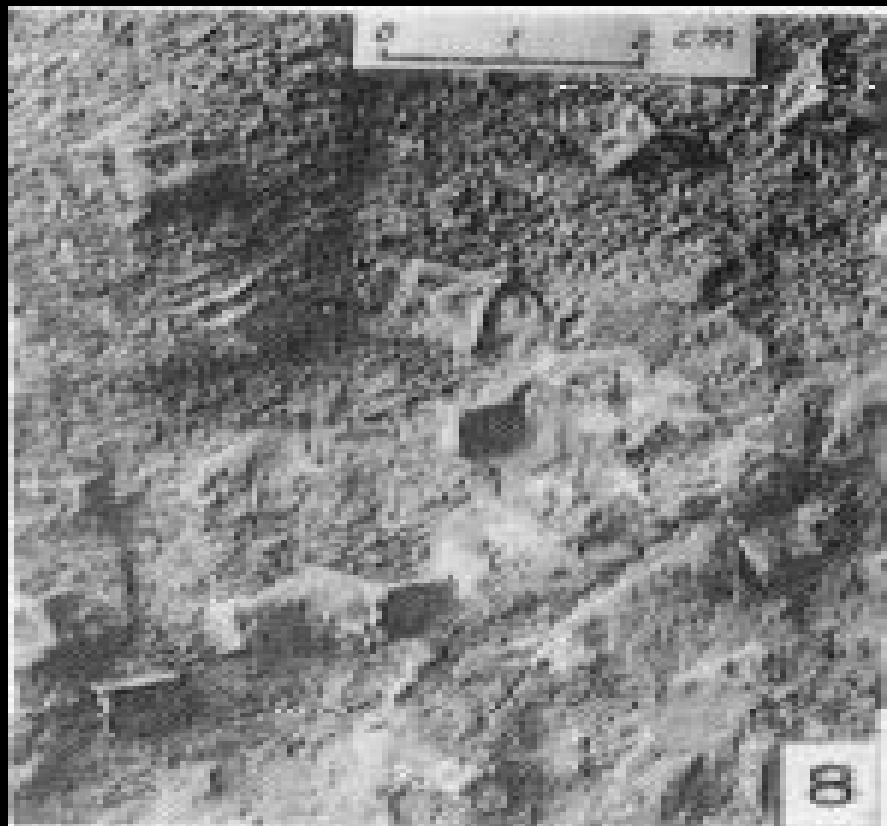


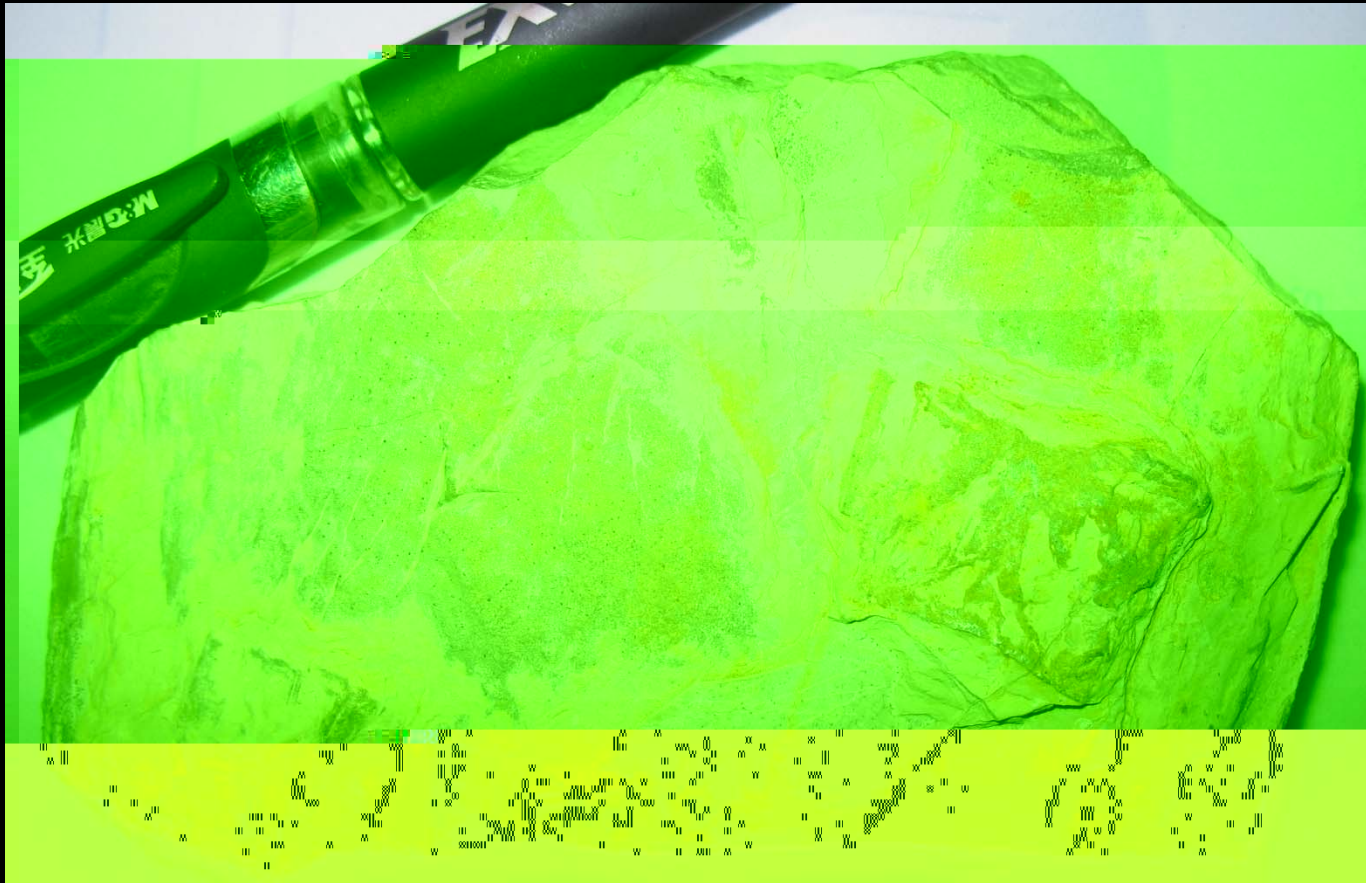




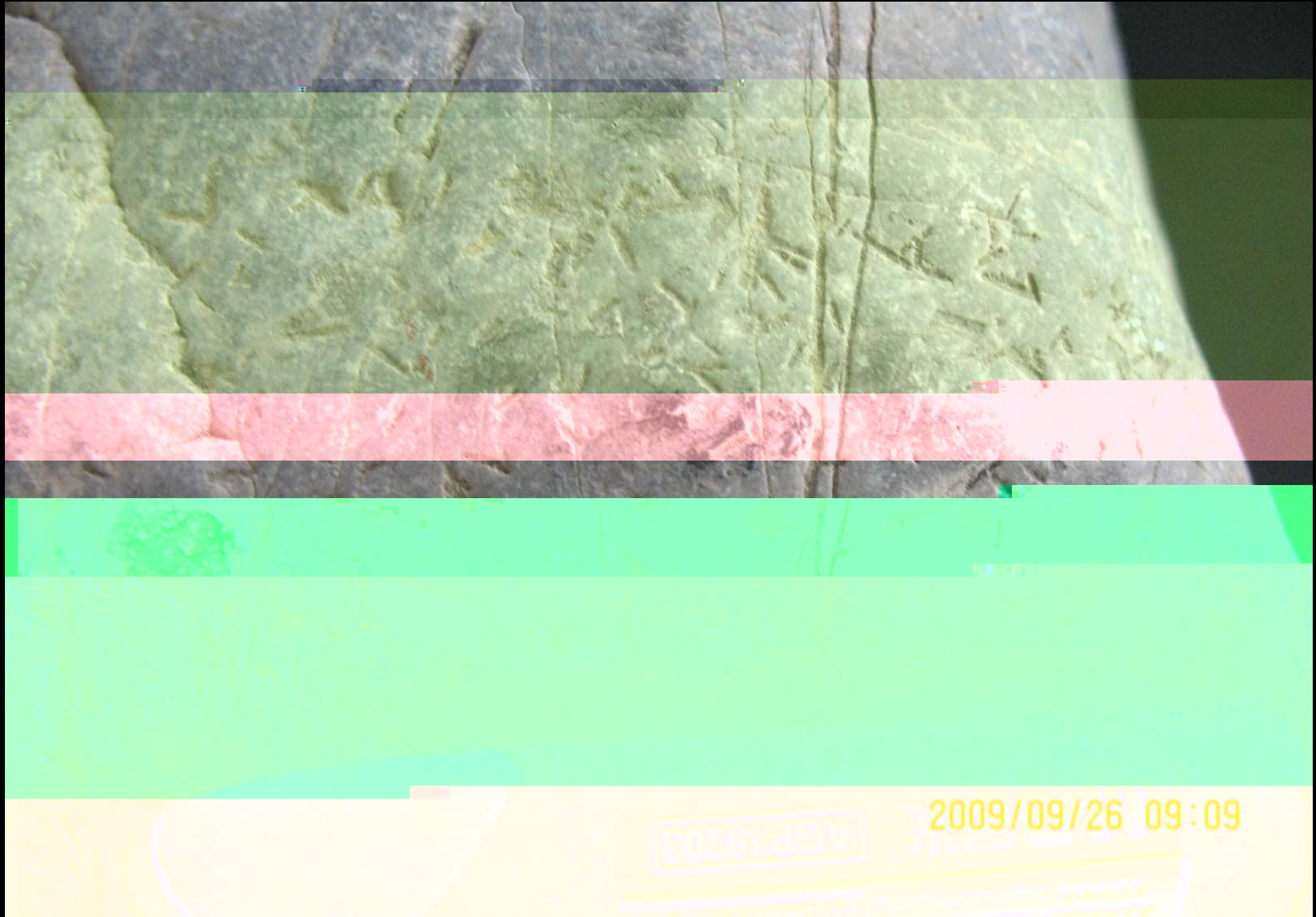


(crystal imprints and crystal pseudomorphs)









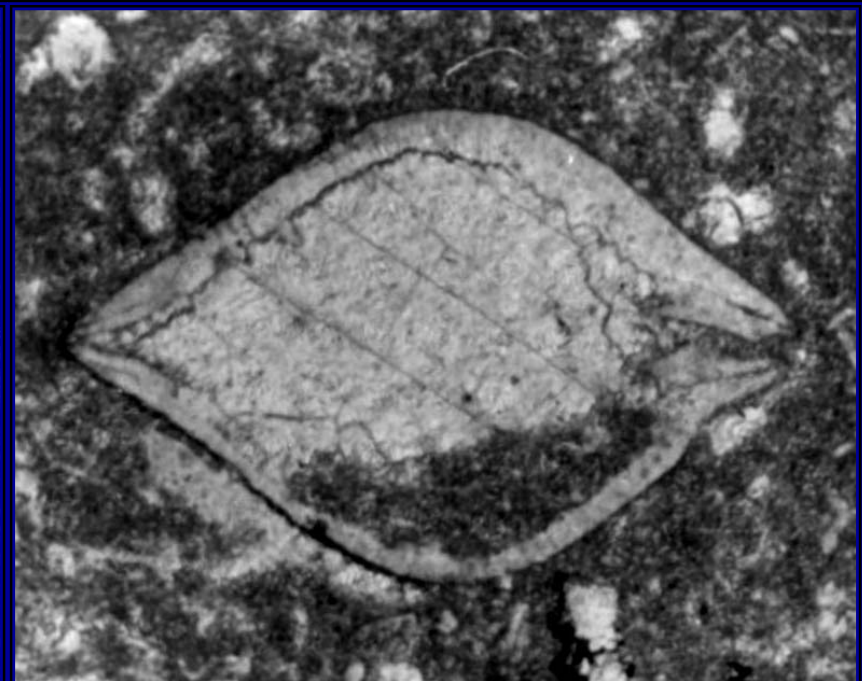
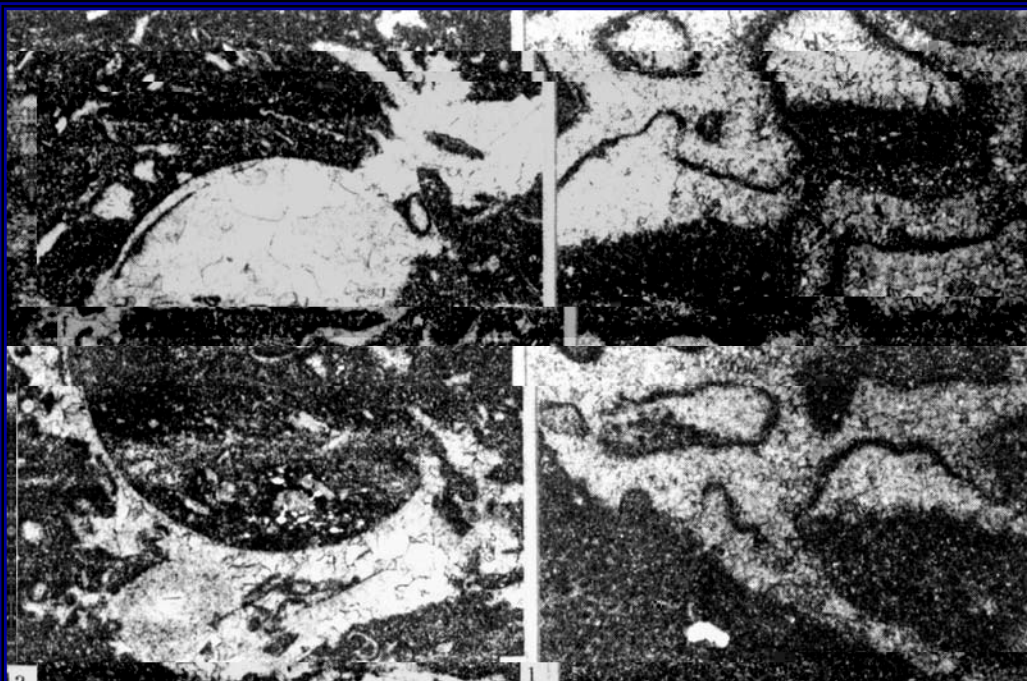
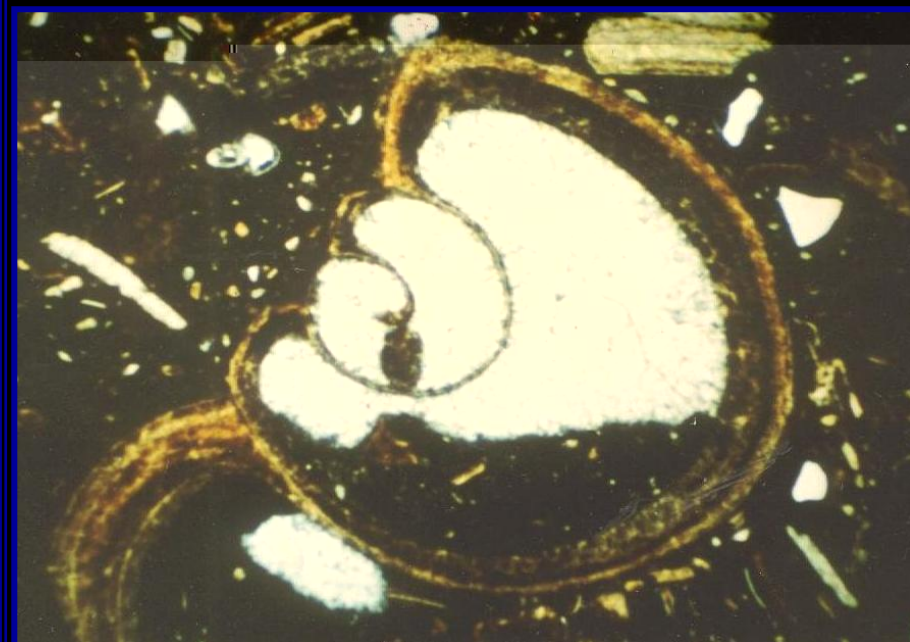
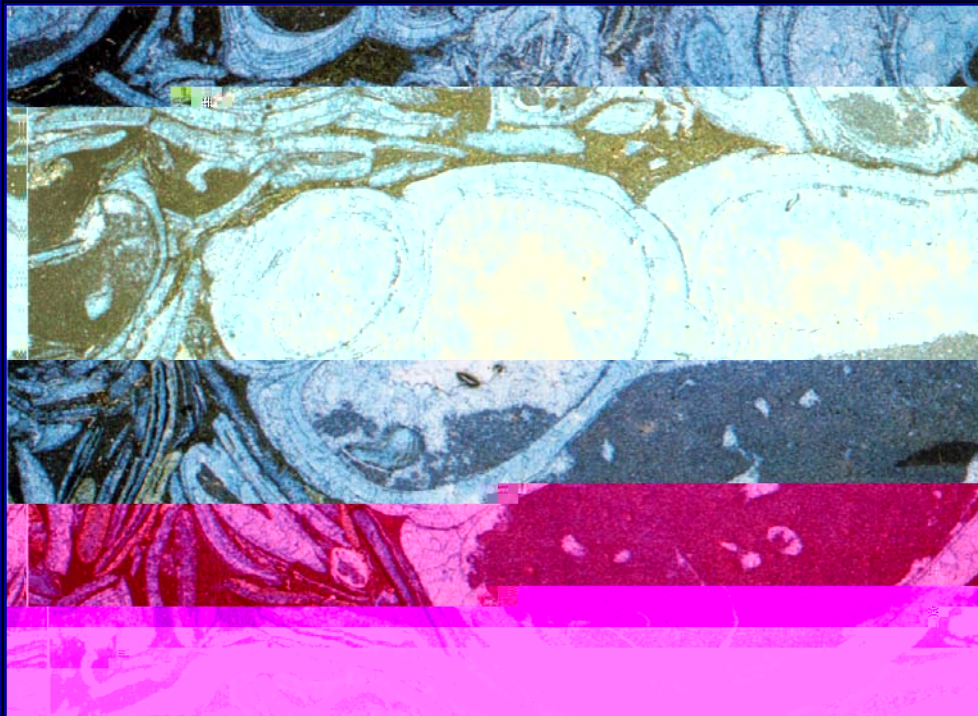


(bird-eye, fenestral structures)





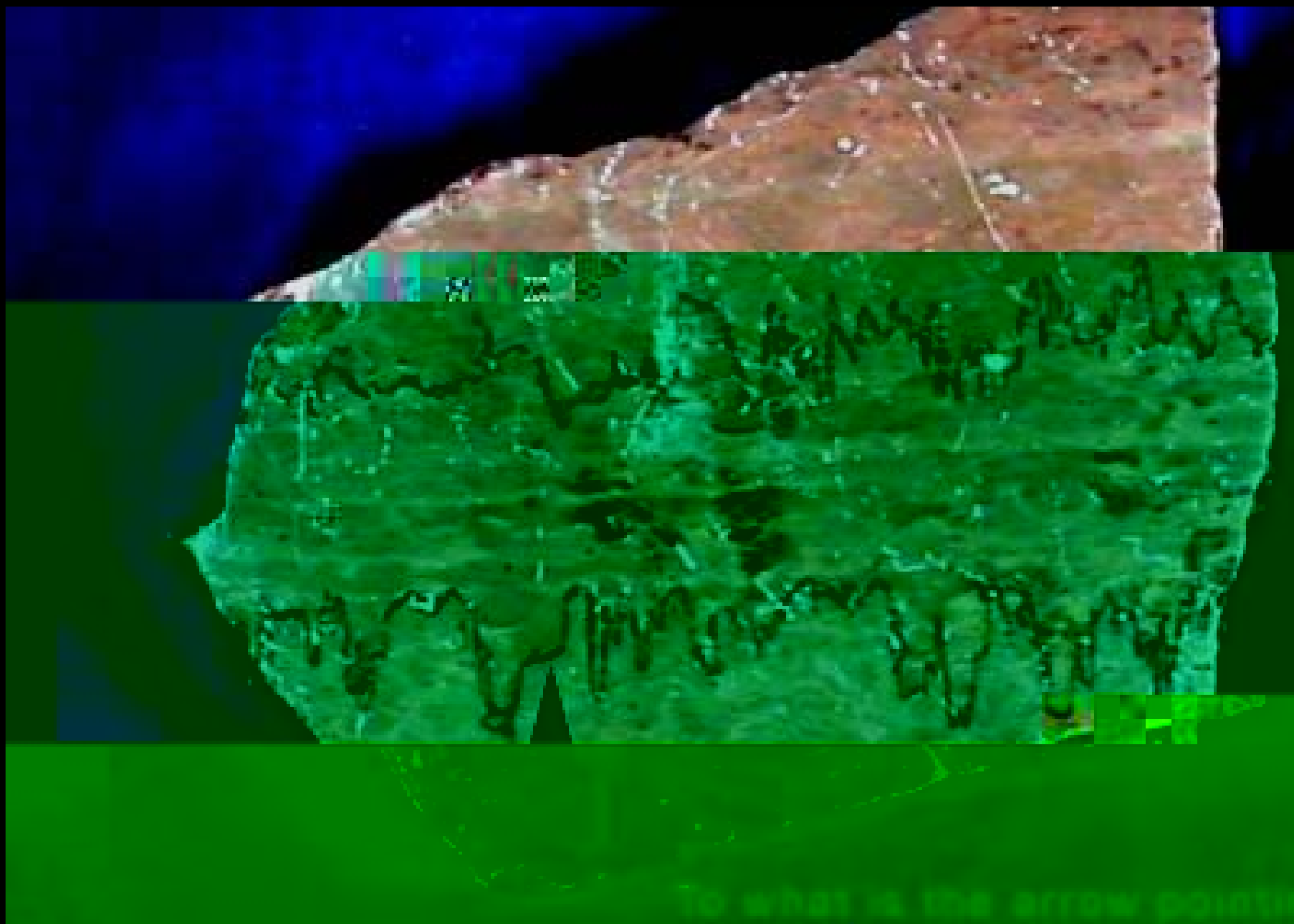
(geopetal structure)

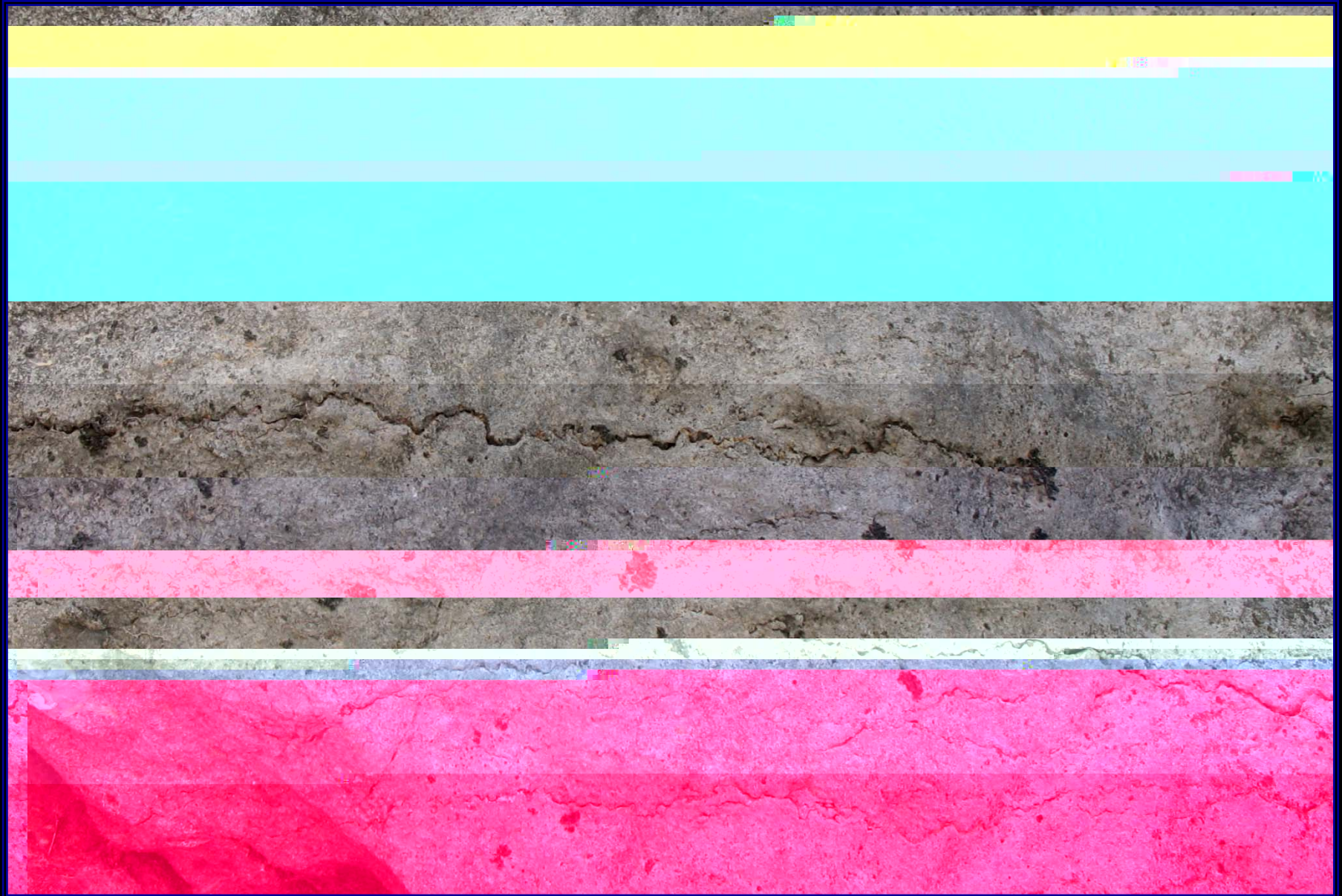






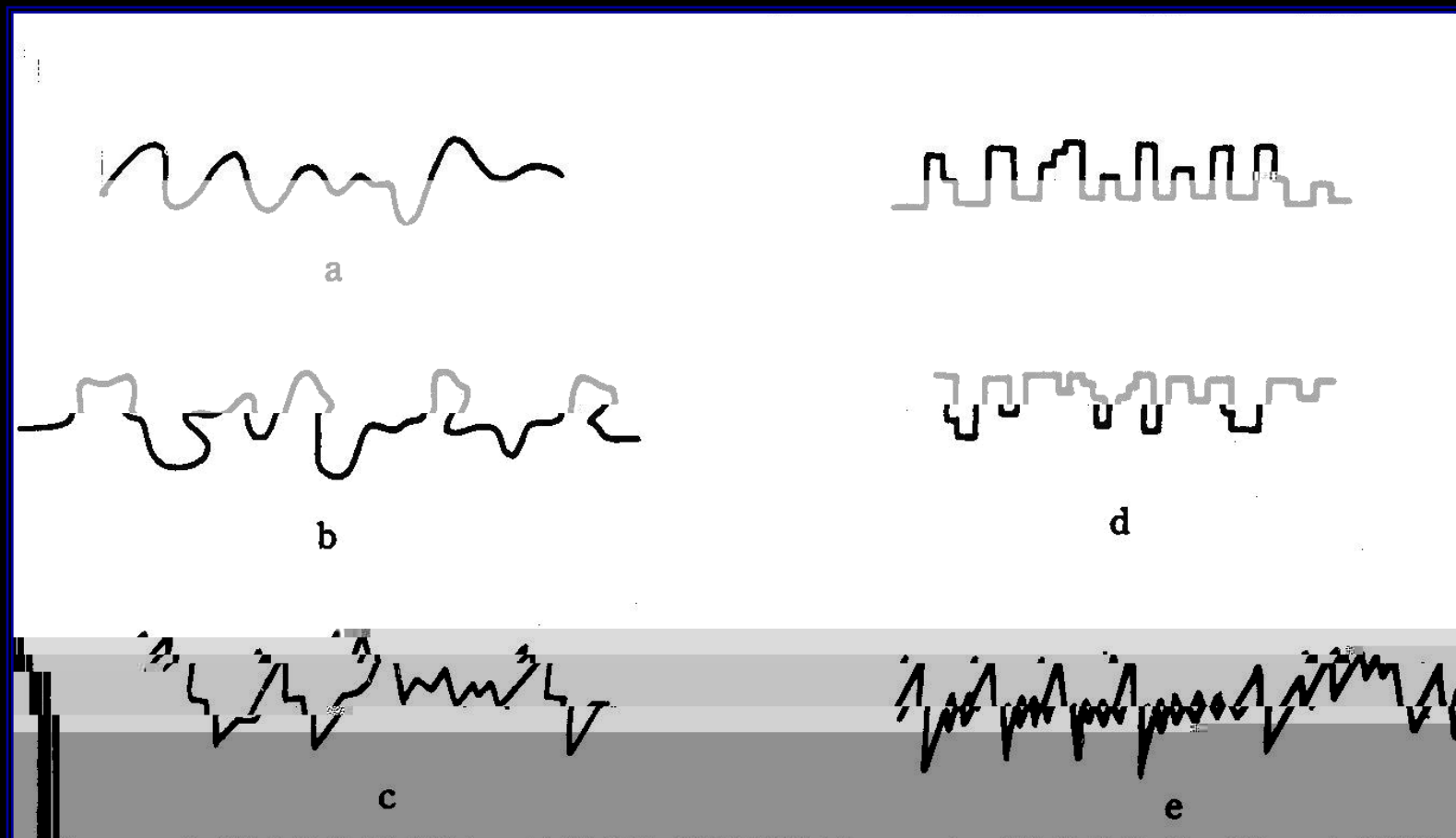
styolite



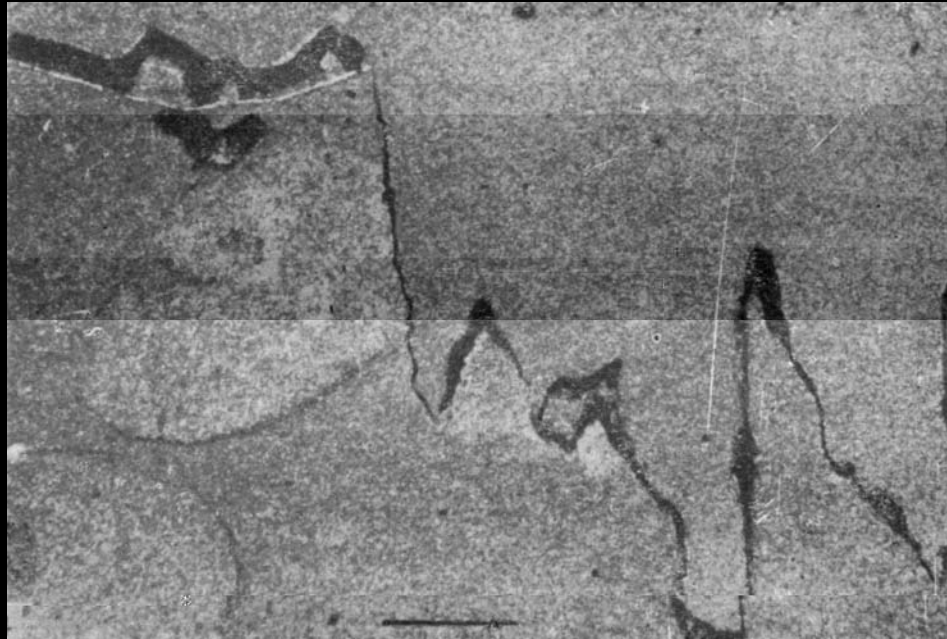




•
;



1mm





(cone-in-cone structures)

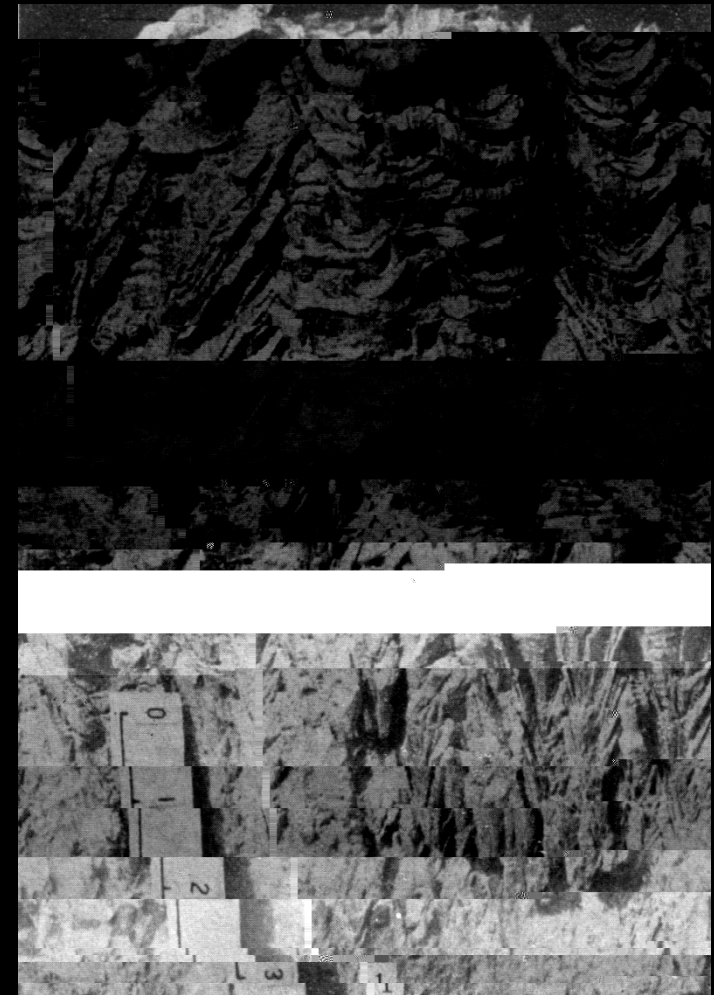




30 60°

1 10cm

“V”



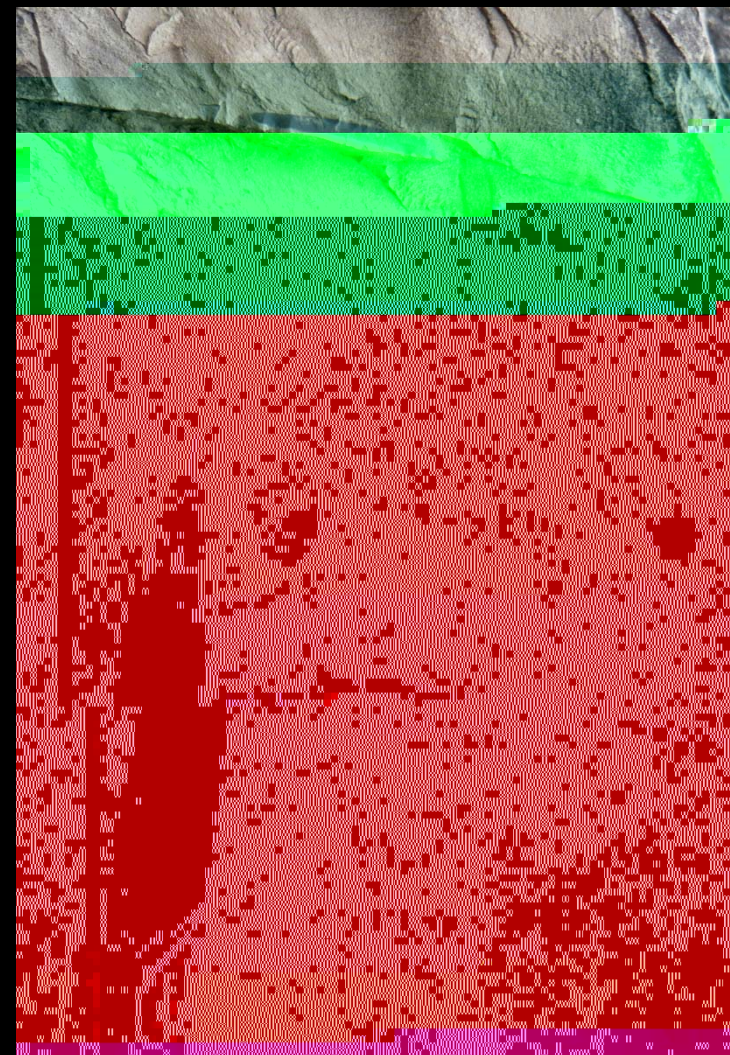
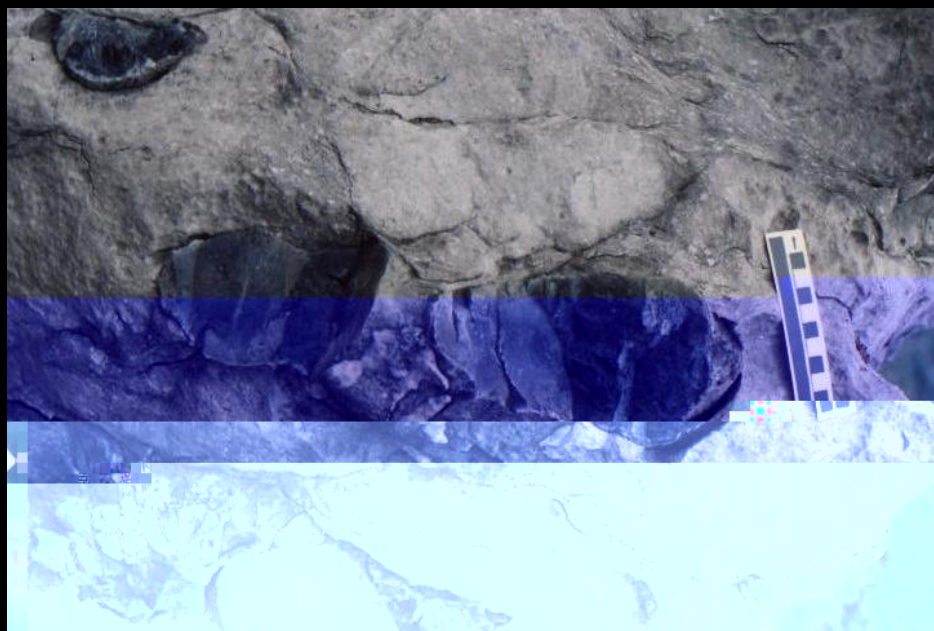




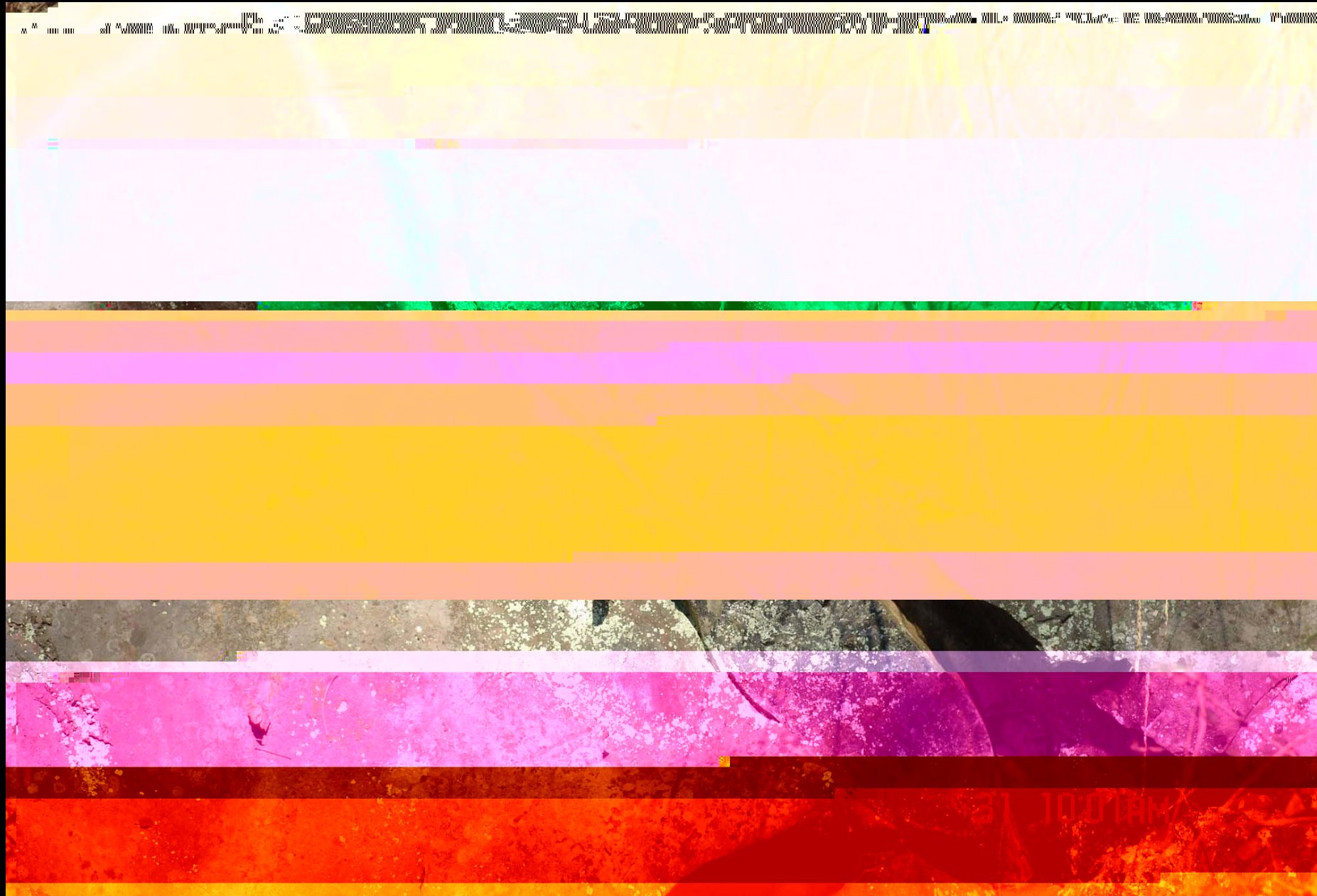
concretion

cluster structure

concretion









1

2

<1cm

cm

3

4

5

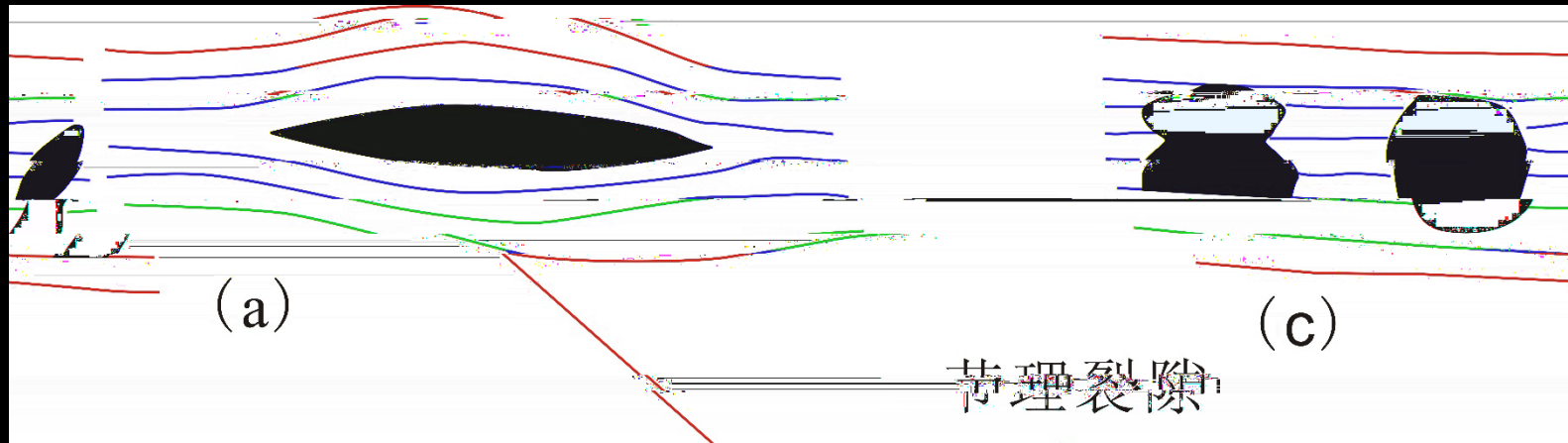


1

Fe Mn

2

3

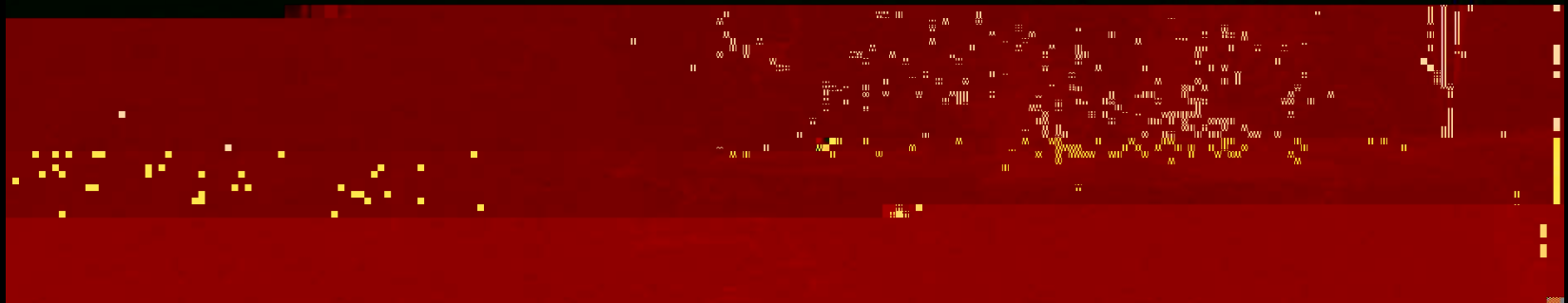


a-

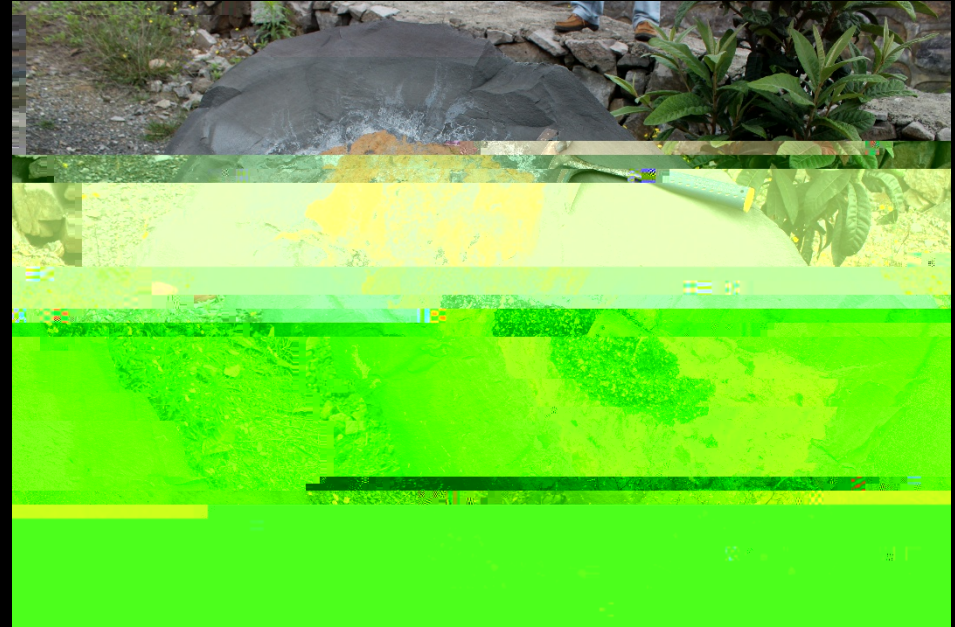
b-

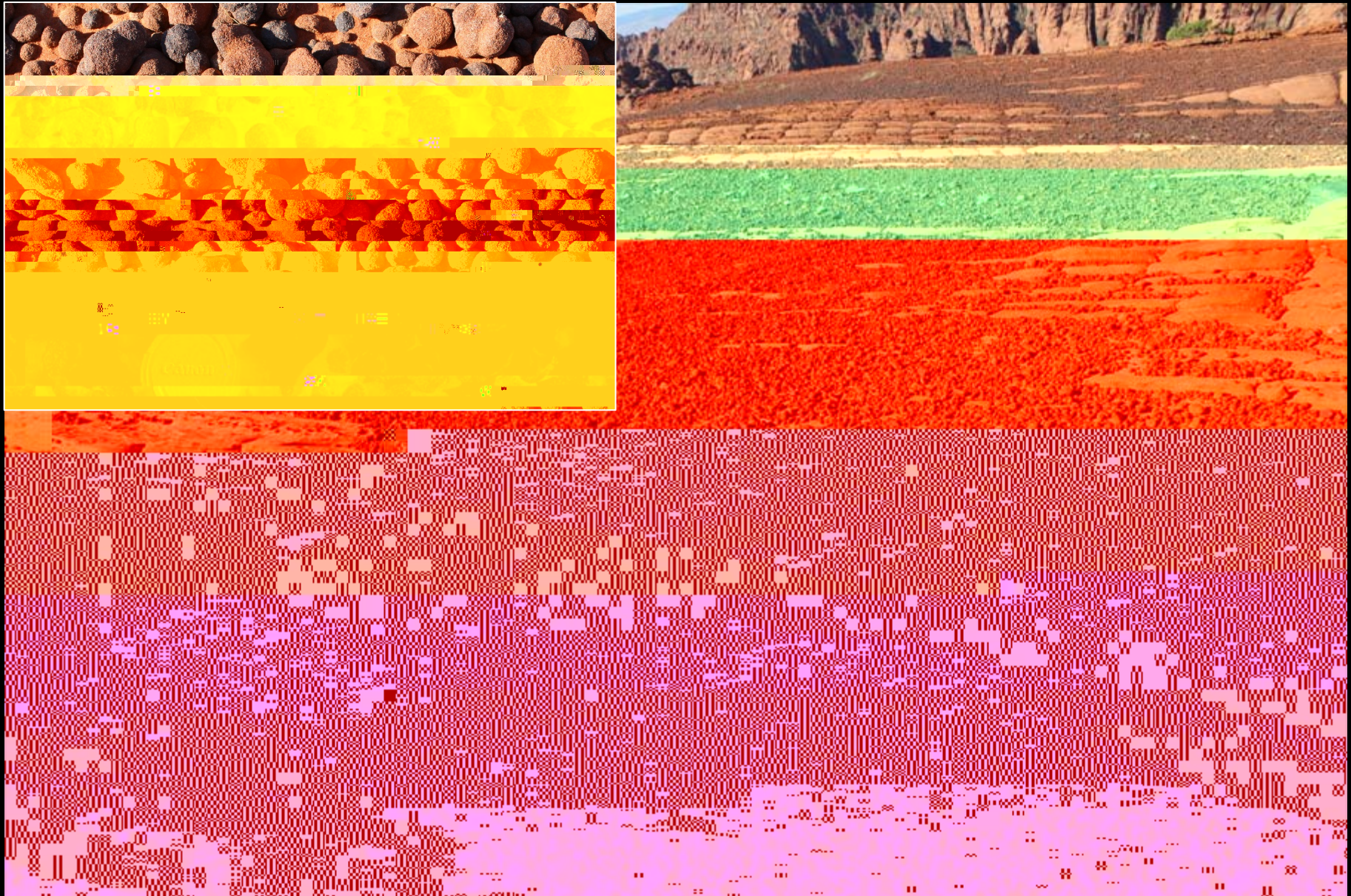
c-

d-





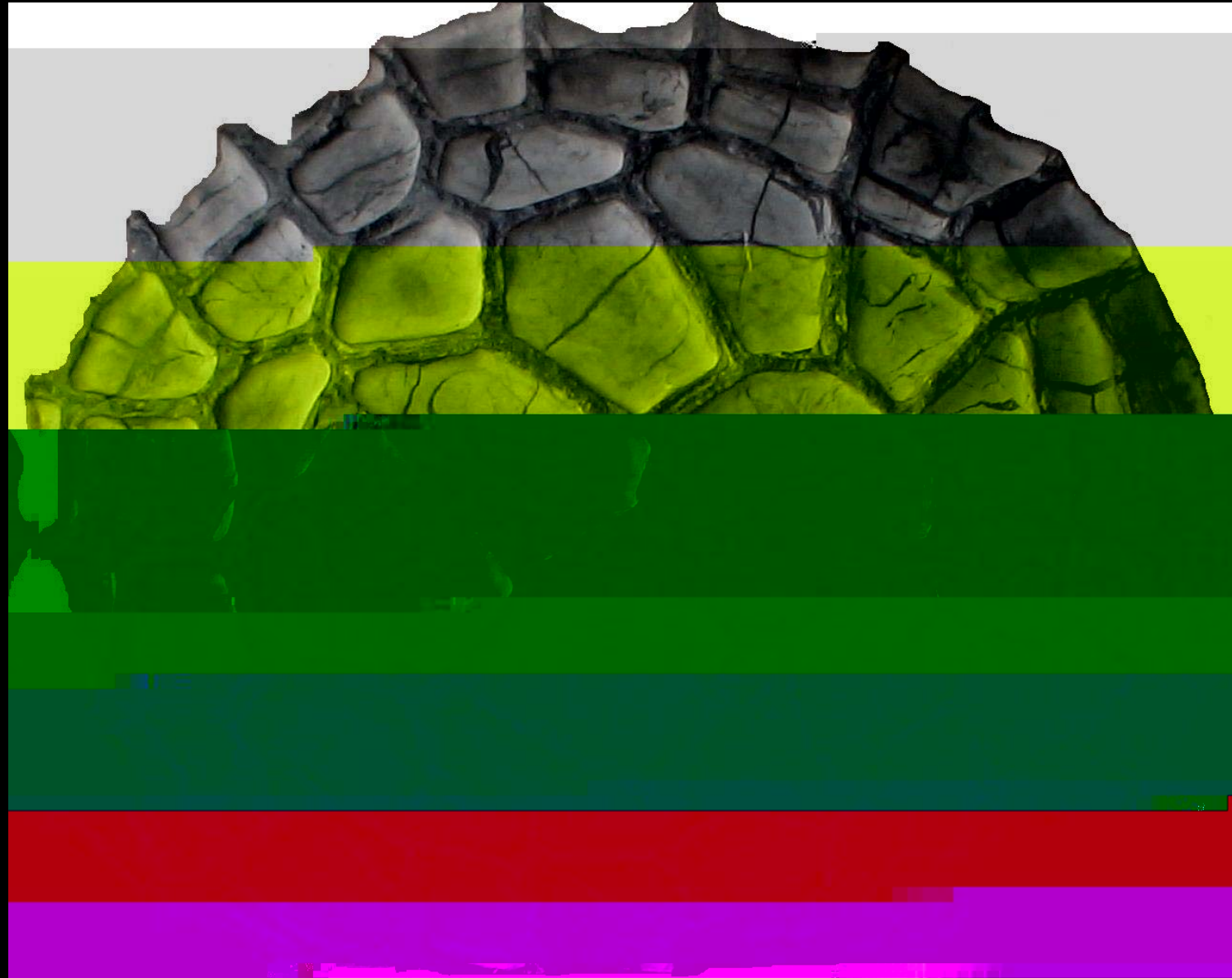




Ferric concretion (G. Hu, 2013, Snow Canyon State Park)



Ferric concretion (G. Hu, 2013, Snow Canyon State Park)







1

2

3



(cluster structures)



巴哈马地区的现代“葡萄石”

今段（从开始阶段到最后阶段）的形态特征。在开始阶段，形状不规则，似葡萄，故名“葡萄石”。后来，经过磨蚀，就逐渐变成圆度很好的颗粒了。放大 10 倍。（据伊林，Illing, 1954）



